

COLOR CALIBRATION JOYSTICK

GROUP 10

REBEL SEQUEIRA
CHRIS BLACKDEN
VISHAL SHAH
PRANALI DHURU
PRATIKSHA PATIL

OVERALL STATUS

- Hardware

Assembled the components on breadboard and currently working on PCB fabrication

- Software

Coding Launchpad using IAR embedded workbench.
Calibrating the axes.

Task Division

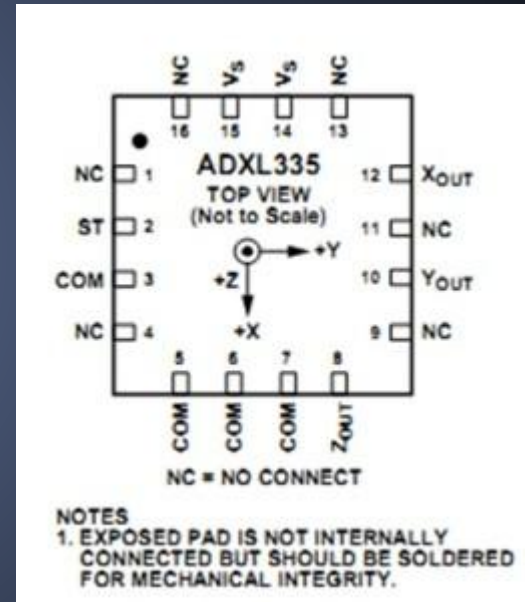
- Hardware Assembly - Chris Blackden
- Hardware Testing - Pranali Dhuru, Pratiksha Patil
- Software - Rebel Sequeira, Vishal Shah

COMPONENTS

- 2x MSP430 Microcontroller
- 1x ADXL335 Accelerometer
- 2x XBee Wireless module
- 1x RGB LED

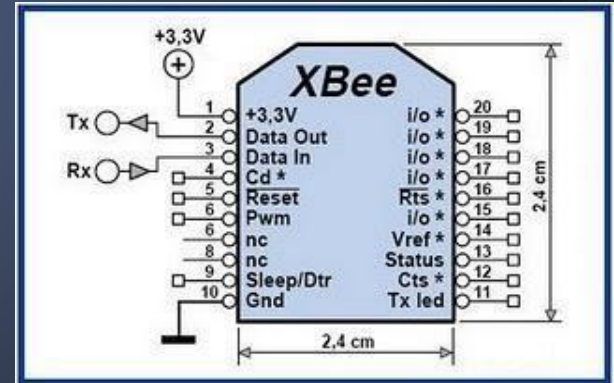
ADXL335 ACCELEROMETER

- Output of the ADXL335 Accelerometer passed on to the MSP430 to calibrate the X,Y and Z axes.
- Ordered and acquired.
- Testing and troubleshooting in progress.

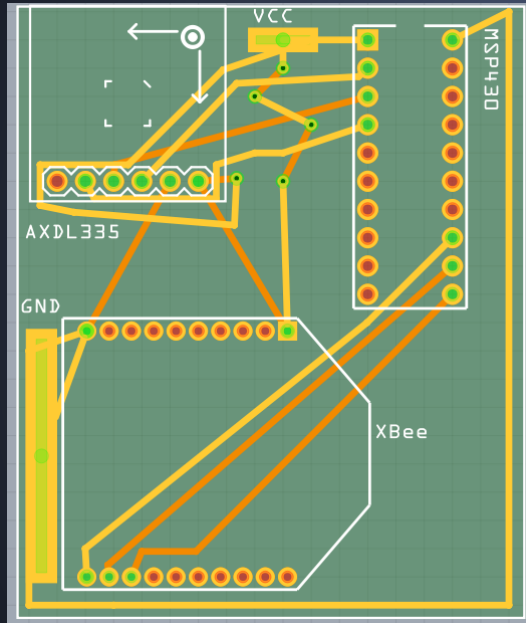


XBEE MODULE

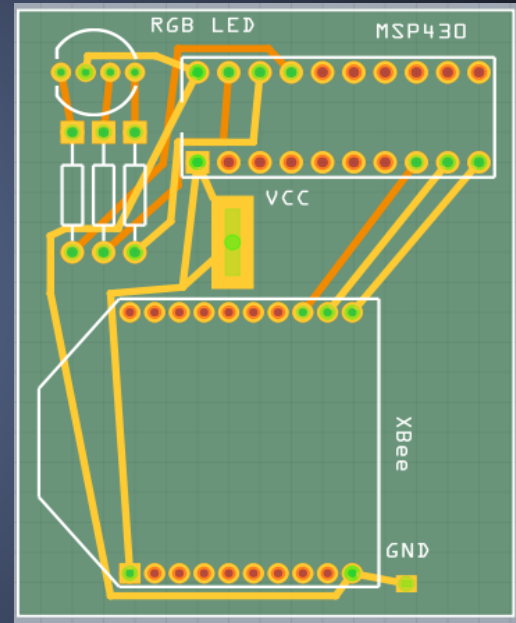
- Ordered and acquired.
- Hardware interface in progress.



PCB



Transmitter



Receiver

SOFTWARE INTERFACE

- Tested the accelerometer with individual pins connected to MSP430 in order to obtain the ADC value to calibrate the axes.
- Currently troubleshooting on the ADC value, in order to get the desired output when all 3 pins connected.

PLAN B

If Xbee falls out as per our plan, then our plan is to get the desired output and results using wired connections, on which we are testing and troubleshooting now.