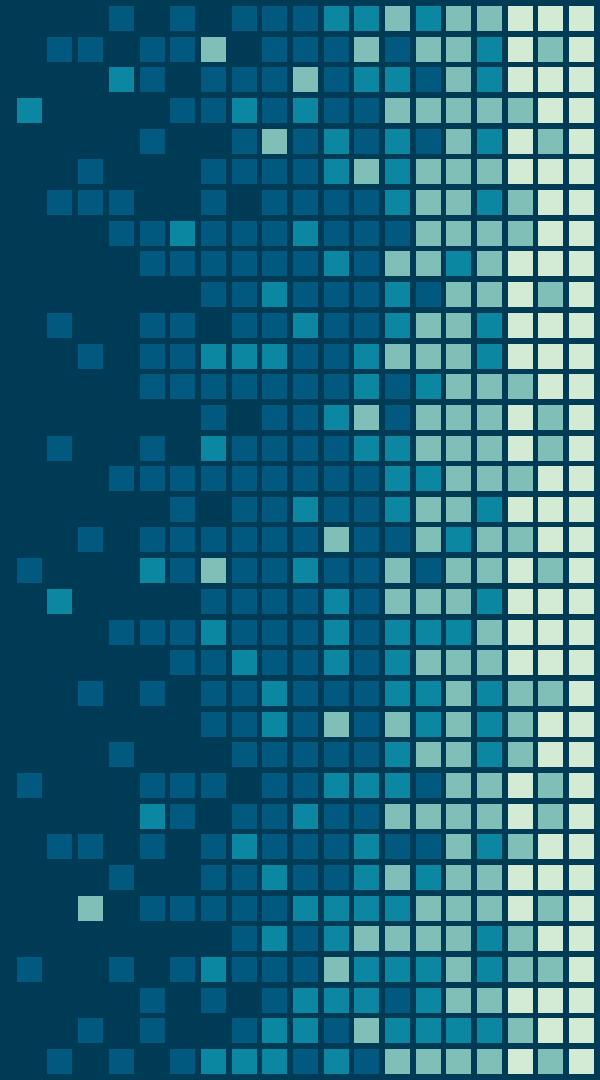


Hand Gesture Controlled RC Car



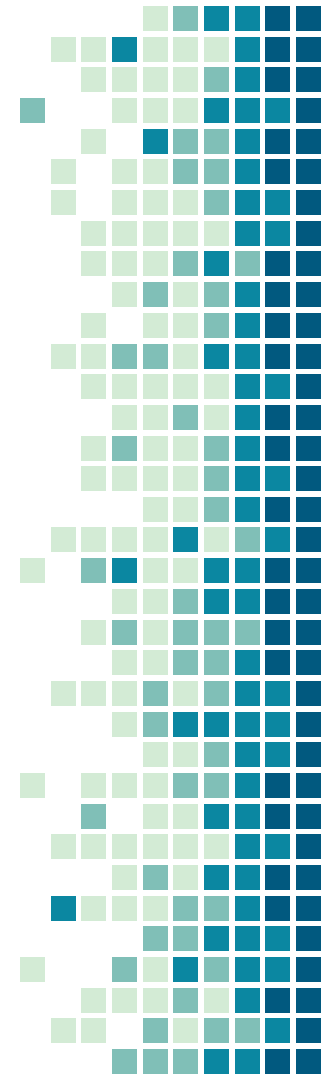
Overall status

Dc motors are acquired and tested

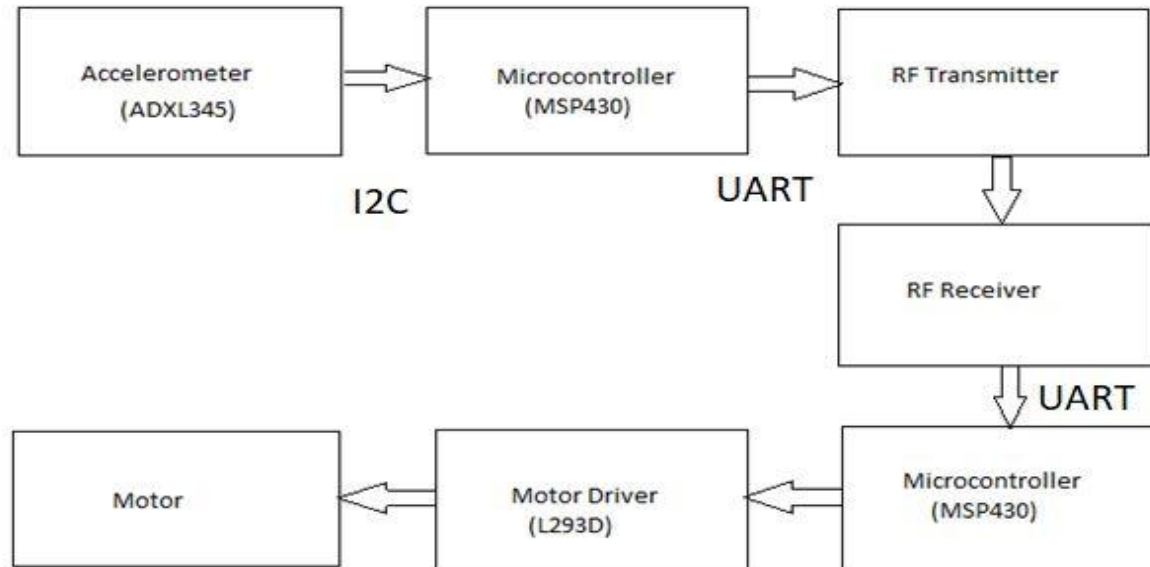
Individual components are tested

Code development in progress

Car assembly is in progress

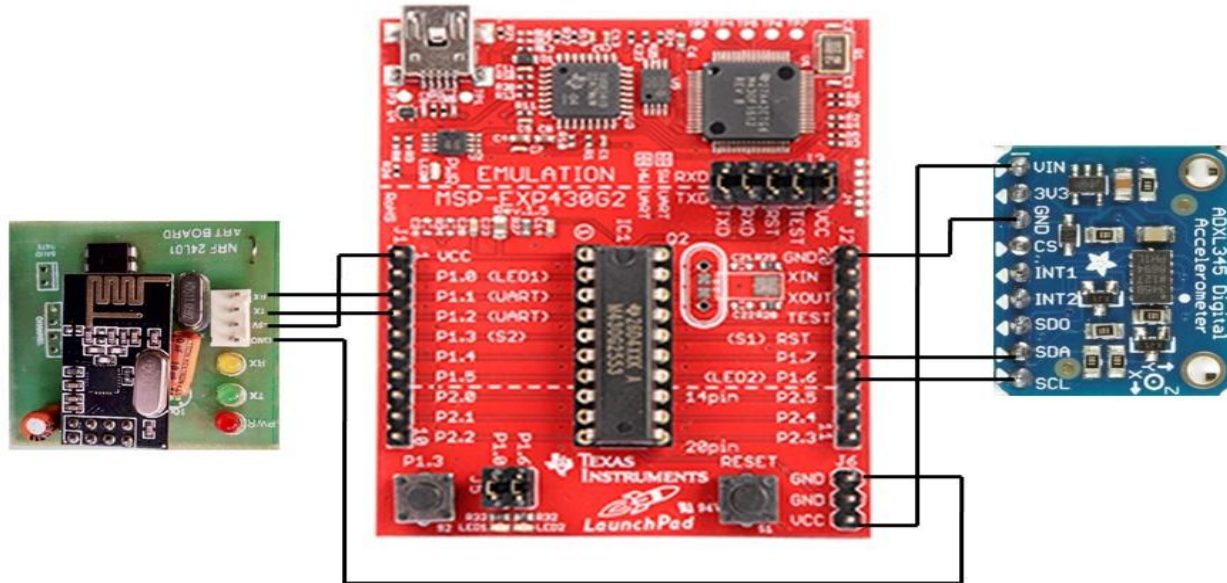


Block diagram



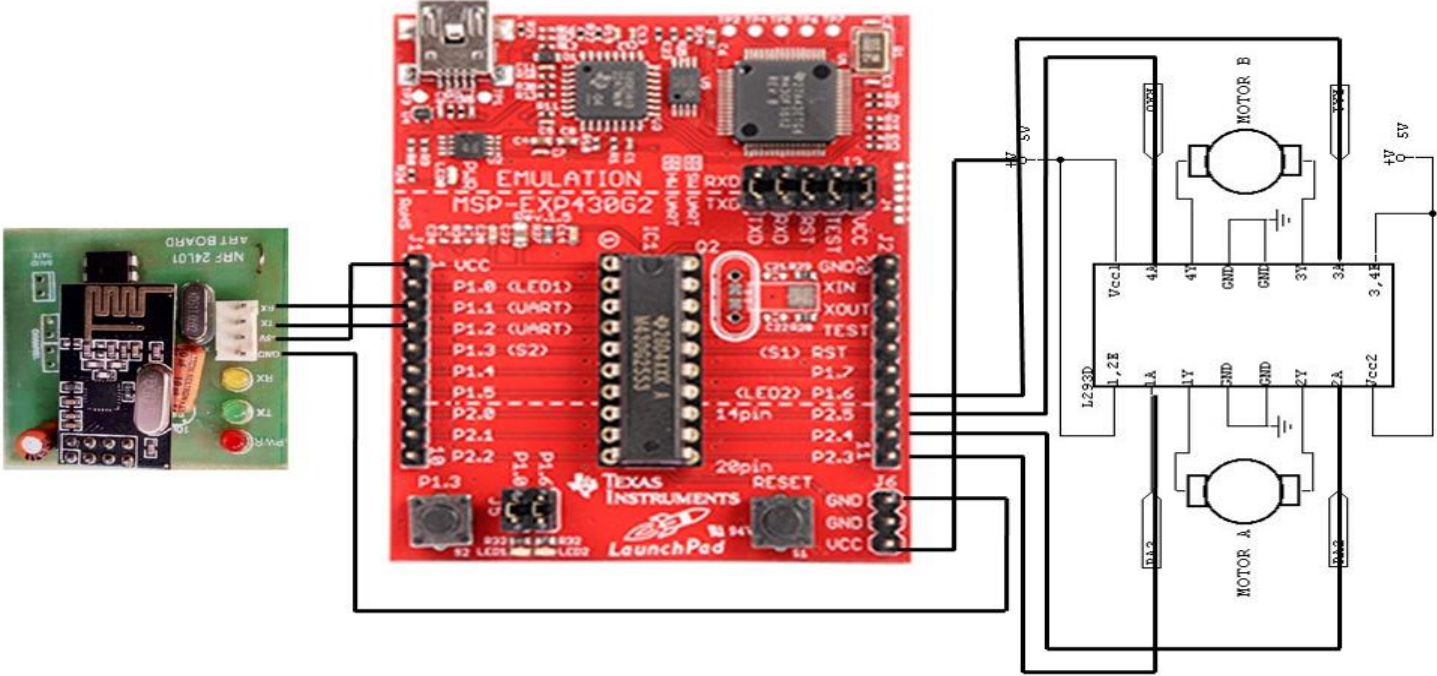
Transmitter

Interfacing – Transmitter Side



Receiver

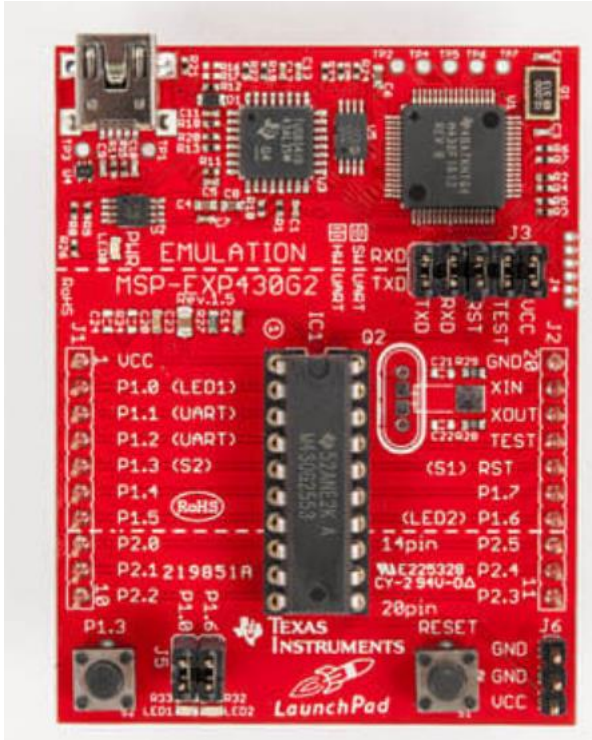
Interfacing – Receiver Side

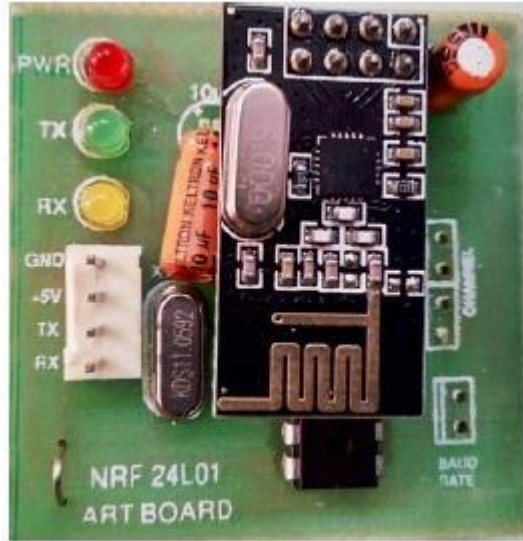


Component type: MSP430 [G2]

- low power microcontroller from Texas instruments.
- 16 kb of flash
- 512B RAM
- 1 I2C , 2 SPI, 1 UART
- 10 bit ADC, 8ch
- 2, 16-bit timers

Status: Received





nRF24L01

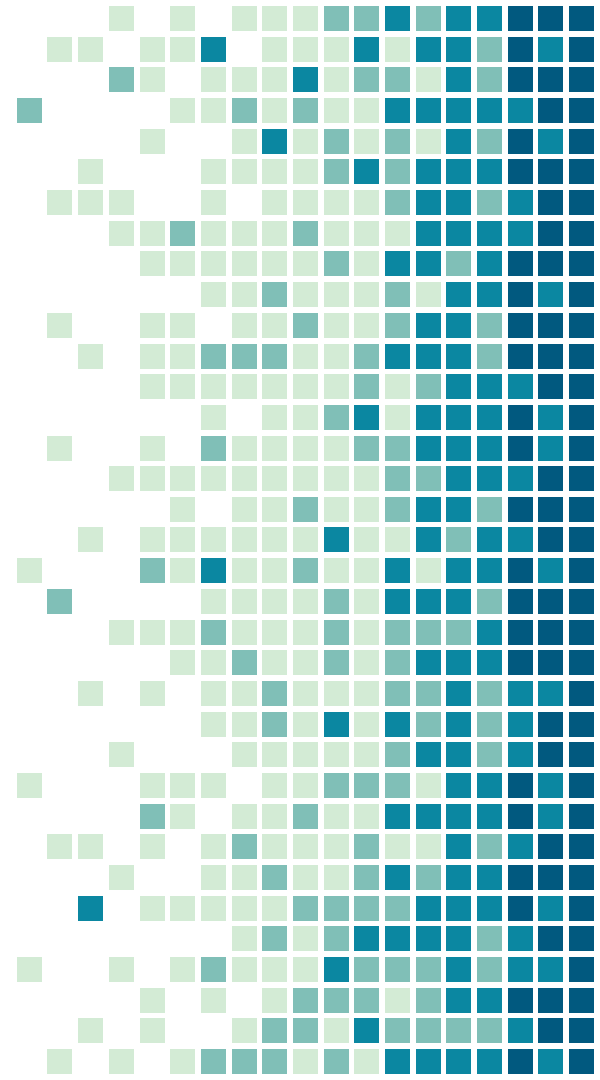
ultra low power (ULP) 2Mbps RF transceiver

- 2.4GHz ISM band operation
- Supports high-speed SPI interface
- Internal linear voltage regulator
- 1.9 to 3.6V supply range

Status: Delivered

Task division

- Sairaj: Microcontroller programming
- Ajinkya: Motor driver circuit interfacing
- Surya: Wireless Transceiver interfacing
- Pratheek : Component testing and interfacing



THANK YOU

Any questions?

